

# *Saving a new Shapes Set*

Here is the procedure for downloading and saving my TimFrostUP **Shape** set. NOTE: With the exception of choosing the 3DEmbroidery vs. the 4DEmbroidery folder, this process (and the technique demonstrated in my AddAFill video are the same for both the 3D and 4D software.

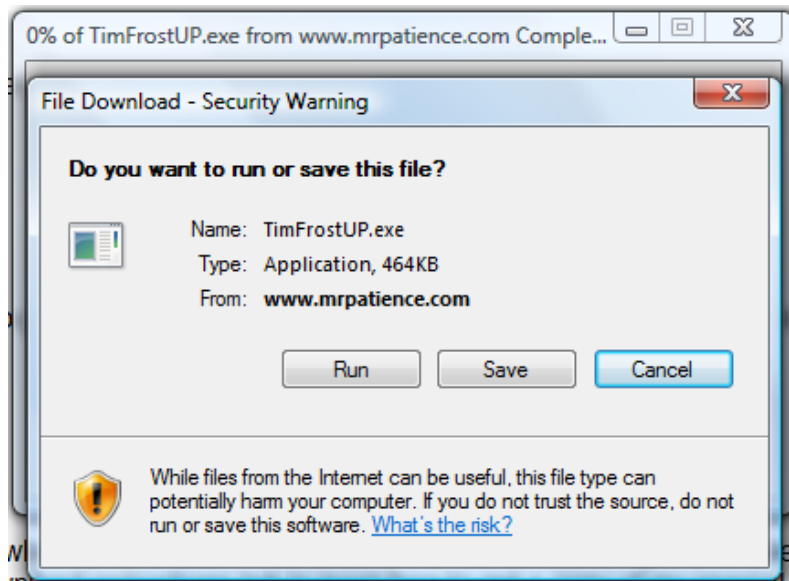
## Create a folder for the Shape Set Download

Using your skills with Windows Explorer (not Internet Explorer) create a folder to temporarily hold the file you are about to download. Name the new folder C:\TimsShapes. If you don't know how to do this, you need to download and read through my free documents (one for Vista and one for XP) and learn how to do this

## Download the Shape Set

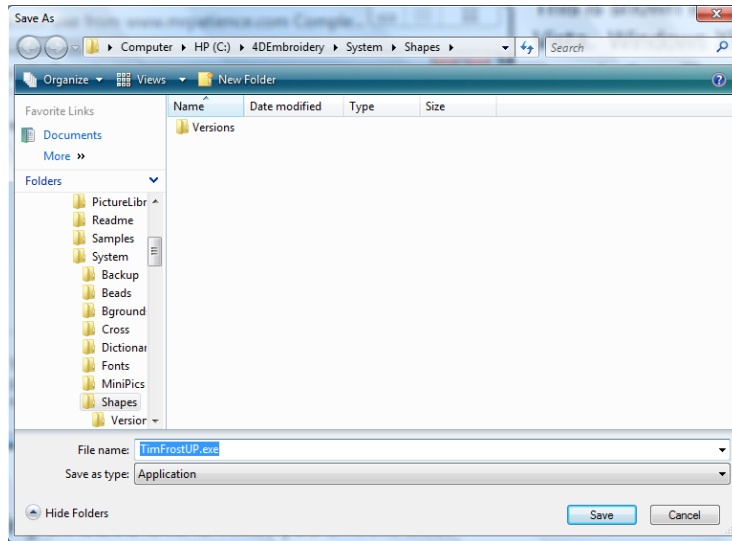
**Left click** on the **Download Shapes** link on my web page [www.mrpatience.com/news/news.html](http://www.mrpatience.com/news/news.html).

You should see something like this:



This is shown in Windows Vista. Windows XP will look very similar. The important thing to do here is **left click** on the **Save** button. By doing this, you will be able to choose the folder in which you want to save this file.

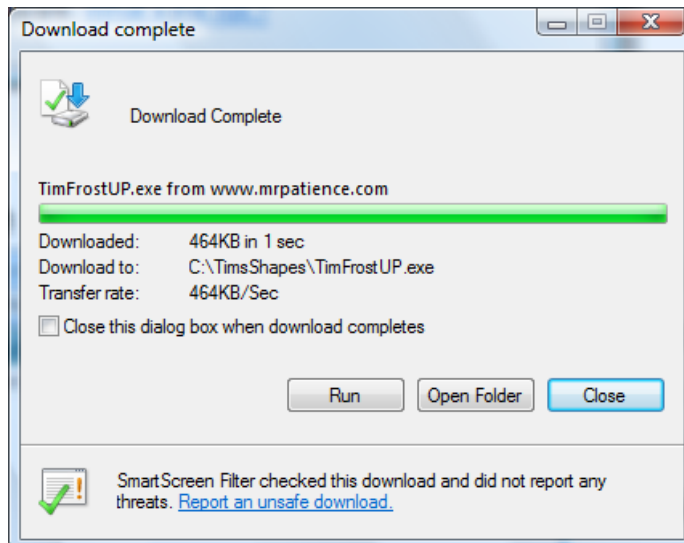
After clicking on **Save** this is what you should see:



This is the **Save As** dialog. If you don't know how to use it, then you need to download and read through my free **Computer Basics** document on my **News** page. **Left click and hold** on the vertical scroll bar and move it up or down until you find the folder you created earlier named C:\TimsShapes. As soon as you find that folder, **left click** on the **Save** button shown here in this dialog.

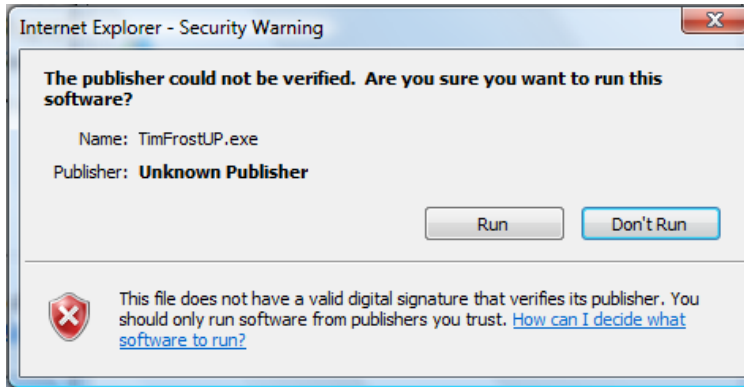
## Opening the Shapes

The next step in the process will look like this:



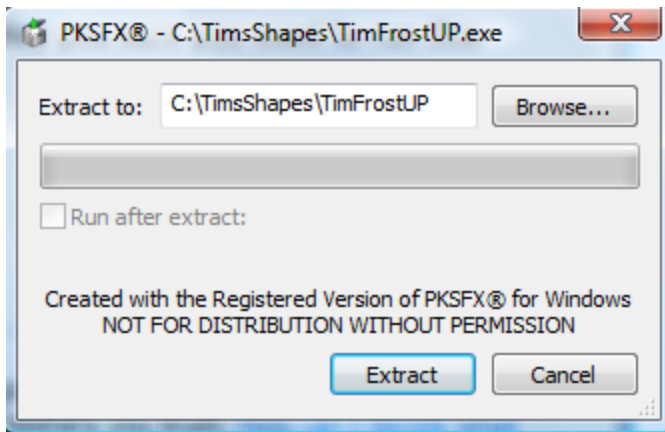
You should see that the file download is complete and it was downloaded to C:\TimsShapes\TimFrostUP.exe and now we are ready to run this file to extract the Shapes Set. **Left click** on the **Run** button.

If you are running Windows Vista, you will see the following warning:



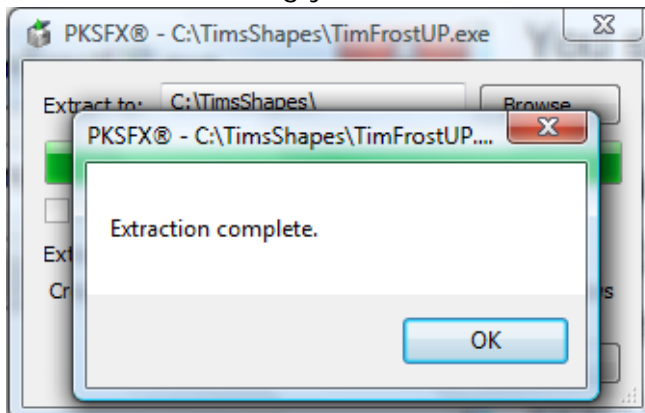
Go ahead and **left click** on the **Run** button.

You will now see this message:



You should see the file name C:\TimsShapes\TimFrostUP in the **Extract to:** text box. **Left click** in the **Extract to:** text box and change the text there to **C:\TimsShapes**. As soon as you are pointing to the correct folder, **left click** on the **Extract** button.

This is the next thing you will see:



At this point you have **extracted** the file from its compressed format. All that remains now is to **copy** the file from the folder **C:\TimsShapes** to the folder named **C:\4DEmbroidery\System\Shapes** and you will be done. **Left click** on the **OK** button and then use the computer skills you learned in my free Basic Computer Skills document to copy

the file named **TimFrostUP.nsp** into your Shapes folder.